

IC105-FASTPOCKET-TX



for all Parallel Print Devices

Features

- High Speed Print Server
- Compliant with IEEE 1284
- 1 MByte/s Data Rate*
- 1 MByte Flash / 2 MByte DRAM
- Button for diagnostics and status information
- External power supply **not** included
- ECP mode
- Novell NCP Burst Mode
- Protected IP printing
- Support of 8 logical printers
- Search and Replace
- Software Download via FTP, IPX, HTML
- Dynamic Firmware Update
- Supports 6 languages
- EMail Notification
- Private SNMP MIB
- 2 Years Warranty
- Technical Support

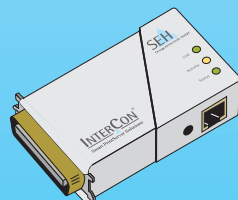
*Depends on printer model

Configuration / Management

- InterCon Administration Software
- HP Network Printer Installer
- HP JetAdmin Compatibility
- HP WebJetAdmin Compatibility
- Epson Status Monitor 2, 3
- EpsonNet Tools Direct Print, Internet Print, NDPS Gateway, Web Manager WinAssist, MacAssist
- Web Browser
- FTP
- SNMP Management Software

Versions for all Parallel Printers

IC105-FASTPOCKET-TX



Order No.:
M03020 (Euro)
M03021 (UK)
M03022 (US)

- 10BaseT
- 100BaseTX

Operating Systems

- Novell NetWare 3.x, 4.x, 5.x
- UNIX
- BS2000
- Apple MacOS 7.x, 8.x, 9.x
- Microsoft Windows 95, 98
- Microsoft Windows NT 3.x, 4.x
- Microsoft Window 2000

Protocols

- IPX / SPX (NDS, Bindery, R/NPRINTER)
- TCP/IP (BOOTP, DHCP, RARP, ARP, IP, ICMP, UDP, TCP, FTP, TFTP, LPD)
- WINS
- BCP / TBCP
- NetBIOS / SMB
- IPP
- DNS
- SLP
- SNMP
- SMTP
- EtherTalk Phase 2
- HTTP / HTML

Operating Environment

- Temperature: 5-40°C
- Rel. Humidity: 20-80%

Tests

- CE Class B
- FCC Class A

▲ High Speed

▲ Easy Installation

▲ Simple Management

▲ JetAdmin Support

▲ WebJetAdmin Support

▲ EpsonNet Tools Support

INTERCON[®]

Smart PrintServer Solutions

InterCon-PrintServers are products of SEH Computertechnik GmbH, Bielefeld, Germany

Technical specifications are subject to change, errors excepted.
Company names and products mentioned in this brochure are registered trademarks of those companies.



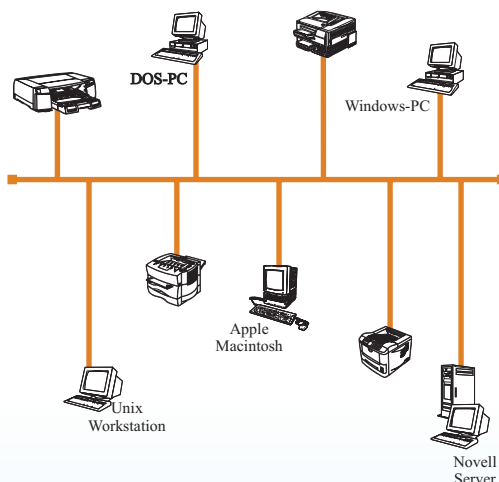
SEH S5 ASIC
TECHNOLOGY

Advantage of Network Printing

Direct Printer Integration

Because of current print server technology printers no longer need to be connected to a workstation or server.

Printers can be integrated into networks as user accessible independent stations simply by adding an internal or external print server.



The InterCon Idea

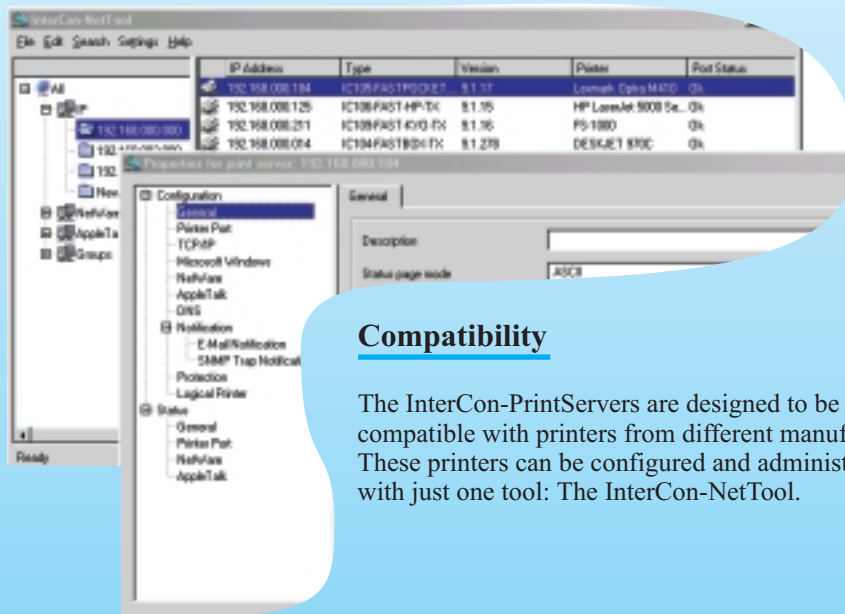
Speed

InterCon-PrintServers are high speed devices that supply every printer in the network with the optimal print data and therefore reduces the possibility of data congestion. The network performance remains unaffected by the print process.

As the main part of the new InterCon-PrintServers our S5 ASIC supports the internal option port of different printer types from various printer manufacturers and the IEEE1284 port (Parallel Centronics).

Multiprotocol Capability

InterCon-PrintServers are specially developed for use in heterogeneous networks. Regardless of the different protocols or operating systems the print server will be automatically recognised.



Compatibility

The InterCon-PrintServers are designed to be compatible with printers from different manufacturers. These printers can be configured and administered with just one tool: The InterCon-NetTool.

Product Service

In addition to a two year warranty, extensive technical support is provided in the form of a Telephone Hotline for customers requests. Software updates can be downloaded free of charge from our web site.

Continuity and manufacturer-specific "Know-How" is guaranteed by the centralisation of development, production and distribution in one location.

Multilingual administration in six different languages



English



Deutsch



Français



Español



Italiano



Portuguêse